



imageRUNNER™
105

A NEW BENCHMARK IN NETWORKED DOCUMENT PRODUCTION

Introducing the Canon imageRUNNER 105, the Digital System that's Setting New Standards in the High-volume, Networked Production Environment

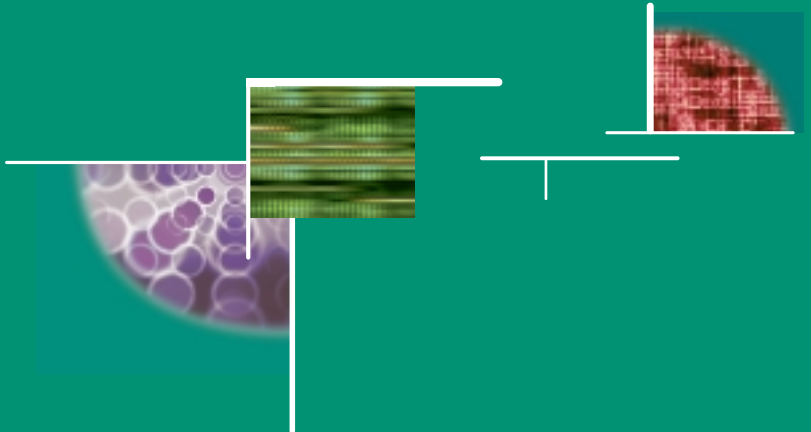
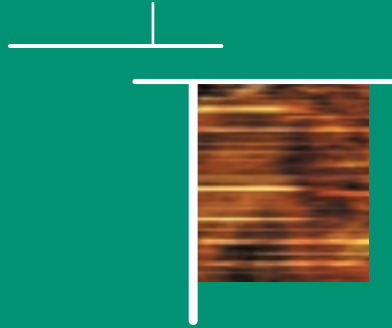
Canon's imageRUNNER products have a reputation for performance, image quality, and ease-of-integration that is virtually unmatched. At 105 pages per minute,* the imageRUNNER 105 comes with all the same award-winning attributes as Canon's existing imageRUNNER products, while also being robust enough to handle the demands of high-volume environments. The result is a unique combination of speed, advanced digital features, and document-finishing capabilities that sets new standards for the high-volume marketplace.

Packed Full of Functionality

The imageRUNNER 105 builds upon Canon's current digital product platform, offering both traditional and new capabilities that allow users to accomplish production jobs with ease. With the ability to support network printing, copying, and both local and network scanning, the imageRUNNER 105 can handle all your document output needs. Advanced functions, such as Copy Reservation, Job Build, and Tab Creation and Insertion, come standard, making the completion of everyday applications easier, faster, and with less manual intervention than ever before. And accessing the imageRUNNER 105's capabilities is easy, too. You can program job parameters using either the free-standing LCD Control Panel or the intuitive printer driver software.

Superior Speed and Image Quality

The imageRUNNER 105 delivers both copies and prints at a quick 105 pages per minute, even when performing advanced functions, such as duplexing, stapling, and hole-punching. What's more, the imageRUNNER 105 scans at a remarkable 80 pages per minute—the fastest integrated scanner of any multifunction device in the world. Even with high-speed, high-volume jobs, the imageRUNNER 105 consistently maintains high image quality, whether it's the first page or the last. With 600 x 600 dpi resolution that's interpolated to 1200 x 600 dpi resolution for copying, and 2400 x 600 dpi for printing, the superiority of imageRUNNER 105 output is clear to see.



Remarkably Compact

The imageRUNNER 105 has a very small footprint for a machine of its speed and strength, allowing it to be placed in environments that previously couldn't accommodate a device of this caliber. Hidden in this compact body are several design enhancements that improve machine durability, thereby allowing the imageRUNNER 105 to deliver large volumes of output quickly, efficiently, and reliably.

Advanced Input, Throughput, and Output Capabilities

With Scan-Once-Print-Many technology and Trayless Duplexing, the imageRUNNER 105 accelerates the production of complex jobs. A standard 100-sheet Automatic Document Feeder (ADF) and large, 7,650-sheet paper supply ensure that long run-length jobs are completed with minimal intervention. And the imageRUNNER 105's extensive finishing capabilities, including stapling, hole-punching, saddle-stitched booklet-making, booklet-trimming, Z-folding, and post-process insertion, provide users with incredible versatility in producing finished sets of documents.

Manage Information Regardless of Form

Through its Mail Box feature, Network ScanGear software, and Universal Send* functions, the imageRUNNER 105 provides users with unmatched flexibility in converting hard-copy documents to digital form. The imageRUNNER 105's Mail Box feature allows users to scan and store hard-copy originals directly to the device's internal hard drive, where they can then be moved, combined, renamed, erased, and printed as required. Using a ScanGear-enabled imageRUNNER 105, users running TWAIN-compliant application software can scan documents from the device for transmission over the network. Scanned images can then be manipulated and managed according to specific user-requirements. And with the imageRUNNER 105's optional Universal Send functions, hard-copy documents can be scanned at the device and sent to multiple destinations in various formats, all in one simple operation.

Unparalleled Network Performance

The imageRUNNER 105 is ideally suited for high-volume print-on-demand and centralized production sites. With print controllers capable of handling 10/100 Ethernet or Token Ring connections, and PostScript® 3 and PCL® 6 print languages, the imageRUNNER 105 can effectively handle the most demanding document workflow.

The imageRUNNER 105 offers two ways to connect to your network—the Canon-designed Network Multi-PDL Printer Kit-B2, and the imagePASS-M1 Print Controller, developed by Canon and Electronics for Imaging (EFI)™. Both solutions have been designed to integrate seamlessly with your existing network infrastructure, and allow users to drive system capabilities right from their desktops.

Canon's NetSpot® Suite—a comprehensive set of system utilities designed to simplify operation and management for both end-users and network administrators—provides easy device installation and network management, while supplying a level of device status and job management capabilities unmatched in the industry. Additionally, Canon's Remote UI™ makes it possible for users to access device status and configuration, job status, address books, and more, simply by entering the IP address of the device using a standard web browser from a desktop PC, with no additional software requirements.

An Impressive Line-up

The imageRUNNER 105 joins an already impressive line-up of Canon digital multifunction products, ranging in speed from 16 to 110 pages per minute.

When considering the imageRUNNER 105's 105-page-per-minute speed, high image quality, extensive document finishing, and seamless integration to customer networks, we think you will agree that the imageRUNNER 105 is a solution that truly sets new standards for the networked production environment.

imageRUNNER 105 Specifications

Type:	Digital, Multifunction Imaging System
Imaging System:	Laser Dry Electrostatic Transfer
Developing System:	Dry Monocomponent Toner Projection
Image Server Memory:	Standard 192MB RAM + 10GB HDD
First-copy Time:	2.8 Seconds from Platen Glass 4.1 Seconds from ADF 6 Minutes or Less Sheets, Books, 3-Dimensional Items 11" x 17" (Ledger)
Warm-up Time:	11" x 17" (Ledger)
Acceptable Originals:	11" x 17" (Ledger)
Max. Original Size:	11" x 17" (Ledger)
Max. Copy Size:	4-1/8" x 5-7/8"
Min. Copy Size:	5 Jobs
Max. Mail Boxes Supported:	5 Jobs
Max. Copy Reservation:	600 dpi x 600 dpi
Copy/Scanning Resolution:	1200 dpi x 600 dpi Interpolated 600 dpi x 600 dpi 2400 dpi x 600 dpi Interpolated
Printing Resolution:	256 Gradients of Gray 105 cpm (Letter)* 52 cpm (Ledger) Standard Automatic Trayless
Half-tone:	
Copy Speed:	
Duplexing:	Standard Automatic Trayless
Magnification Reduction/Enlargement:	25% to 400% in 1% Increments
Paper Supply Standard:	Dual Front-loading Trays (1,500 Sheets Each) Dual Front-loading Cassettes (550 Sheets Each) 50-sheet Stack Bypass 3,500-sheet Paper Deck-N1 (Total: 7,650 Sheets)
Optional:	
Multiple Copies:	1 to 999
Paper Weights:	17 lb. Bond to 110 lb. Index (All Paper Sources)
Supplies Drum:	Amorphous Silicon—Estimated Yield: 5,000,000 Impressions
Maximum Duty Cycle:	600,000 Impressions per Month
Toner:	Magnetic Negative Toner—Estimated Yield: 36,600 Images
ACCESSORIES	
Automatic Document Feeder	
Acceptable Originals:	Statement to Ledger
Scanning Speed:	80 ppm (Letter)
Capacity:	100 Sheets (All Sizes/20 lb.)
Paper Weights:	13 lb. Bond to 110 lb. Index
Finisher-K1N/K2N (Optional)	
Number of Trays:	2 Trays
Tray Capacity Top Tray:	1,000 Sheets (All Sizes) Offset Stacking
Lower Tray:	2,000 Sheets (Letter) 1,000 Sheets (11" x 17", Legal) Offset Stacking
Staple Position:	1 - Any Corner 2 - Side Margin
Max. Stapling Capacity:	100 Sheets (Letter/Statement) 50 Sheets (Letter-R/Legal/11" x 17")
Hole-punch (K2N Only):	3 Holes (11" x 17", Letter) 2 Holes (Legal, Letter-R)
Saddle Finisher-K3N (Optional)	
Number of Trays:	3 Trays
Tray Capacity Top Tray:	1,000 Sheets (All Sizes) Offset Stacking
Lower Tray:	2,000 Sheets (Letter) 1,000 Sheets (11" x 17", Legal) Offset Stacking
Saddle-stitch Tray:	30 Sets
Staple Position:	1 - Any Corner 2 - Side Margin
Max. Stapling Capacity:	100 Sheets (Letter/Statement) 50 Sheets (Letter-R/Legal/11" x 17")
Hole-punch:	3 Holes (11" x 17", Letter) 2 Holes (Legal, Letter-R)
Saddle-stitch Capabilities	
Saddle-stitch Paper Sizes:	11" x 17", Letter
Stapling Capacity:	15 Sheets (60 Pages)
Folding:	V-folding Standard
Paper Deck-N1 (Optional)	
Paper Capacity:	3,500 Sheets
Paper Size:	Letter
Paper Weights:	17 lb. Bond to 110 lb. Index

Document Insertion Unit-B1▲ (Optional)

Paper Sizes: Letter-R to 11" x 17"
Paper Weights: 17 lb. Bond to 110 lb. Index
Feeder Capacity: Letter, Letter-R: 100 Sheets
Legal, 11" x 17": 50 Sheets

Paper Folding Unit-C1▲ (Optional)

Paper Sizes: 11" x 17" Only
Paper Weights: 17 lb. Bond to 22 lb. Bond
Fold Type: Z-fold

Booklet Trimmer-A1▲▲ (Optional)

Sheet Capacity: 30 Sheets (60 Pages)
Stack Capacity: 2,000 Pages
Dust Capacity: 2,000 Pages

Network Multi-PDL Printer Kit-B2 (Optional)

PDL Support: PostScript® 3 Emulation
PCL® 5e, PCL® 6
Interface Connections: RJ-45 (10/100Base-T)
IEEE 1284
Token Ring (Optional Card)
Protocol Stacks: Ethernet
IPX/SPX™: 802.2, 802.3
Ethernet II, 802.2 SNAP
TCP/IP
Network OS: AppleTalk Phase II
Novell® NetWare® v3.2, 4.1, 4.11,
4.2, 5, 5.1
Windows® 95/98/Me
Windows NT® 4.0/2000
Solaris™ 1.x, 2.5 or Later**
Apple System 7.5 or Higher
NDPS, Port 9100, IPP
Print Service:
Additional Functions Supported: Network ScanGear, Remote UI,
NetSpot, Universal Send

Canon imagePASS-M1 Print Controller (Optional)

Hardware: External Stand-alone Controller
Processor: Intel Mobile Pentium III 500MHz
Memory: 128MB DIMM
Storage: 10.2GB Hard Disk Drive
PDL Support: Adobe PostScript 3
PCL 5e, PCL 6
Interface Connections: RJ-45 (10/100Base-T)
IEEE 1284
Token Ring (Optional Card)**
Protocol Stacks: Ethernet
IPX/SPX: 802.2, 802.3
Ethernet II, 802.2 SNAP
TCP/IP
AppleTalk: 802.2 SNAP and
AppleTalk Phase II
Network OS: Novell NetWare v3.2, 4.1, 4.11,
4.2, 5
Windows® 95/98
Windows NT® 4.0/2000
Solaris 1.x, 2.5 or Later**
Apple System 8.6 or Higher
NDPS, Port 9100, IPP
Print Service:
Additional Functions Supported: Network ScanGear, Remote UI,
NetSpot (except Job Monitor),
WebTools
Additional Functions Standard: Command WorkStation,
Fiery Downloader, Fiery Link

*105 pages per minute when printing/copying letter-sized documents from paper sources other than the Stack Bypass and the lower two Cassettes.

**Check with your local Canon-authorized Dealer for availability.

▲ The Document Insertion Unit-B1, the Paper Folding Unit-C1, and the Booklet Trimmer-A1 can only be used with the Saddle Finisher-K3N.

Canon KNOW HOW™

1-800-OK-CANON
www.usa.canon.com

Canon U.S.A., Inc.
One Canon Plaza
Lake Success, NY 11042

As an ENERGY STAR® Partner, Canon U.S.A., Inc. has determined that this product meets the ENERGY STAR® guidelines for energy efficiency. The ENERGY STAR name is a registered trademark of the U.S. Environmental Protection Agency. Microsoft, Windows, and Windows NT are registered trademarks of Microsoft Corporation in the United States and/or other countries. Adobe and PostScript are registered trademarks of Adobe Systems Incorporated. PCL is a registered trademark of Hewlett-Packard. EFI is a trademark of Electronics for Imaging, Inc. Novell and NetWare are registered trademarks, and IPX/SPX is a trademark of Novell, Inc. Macintosh and AppleTalk are registered trademarks of Apple Computer, Inc. Intel and Pentium are registered trademarks of Intel Corporation. Sun is a registered trademark, and Solaris is a trademark of Sun Microsystems, Inc. in the United States and other countries. Canon and NetSpot are registered trademarks, and IMAGERUNNER, Canon Know How, and the GENUINE logo are trademarks of Canon, Inc. Universal Send and Remote UI are trademarks, and IMAGEANYWARE is a service mark of Canon U.S.A., Inc. All other terms and products may be trademarks or registered trademarks of their respective owners and are hereby acknowledged.

Specifications subject to change without notice.

0023W935

0901-IR105-75M

PRINTED ON RECYCLED
PAPER IN THE U.S.A.

